

# TI Pro v5.7.7 Release Notes

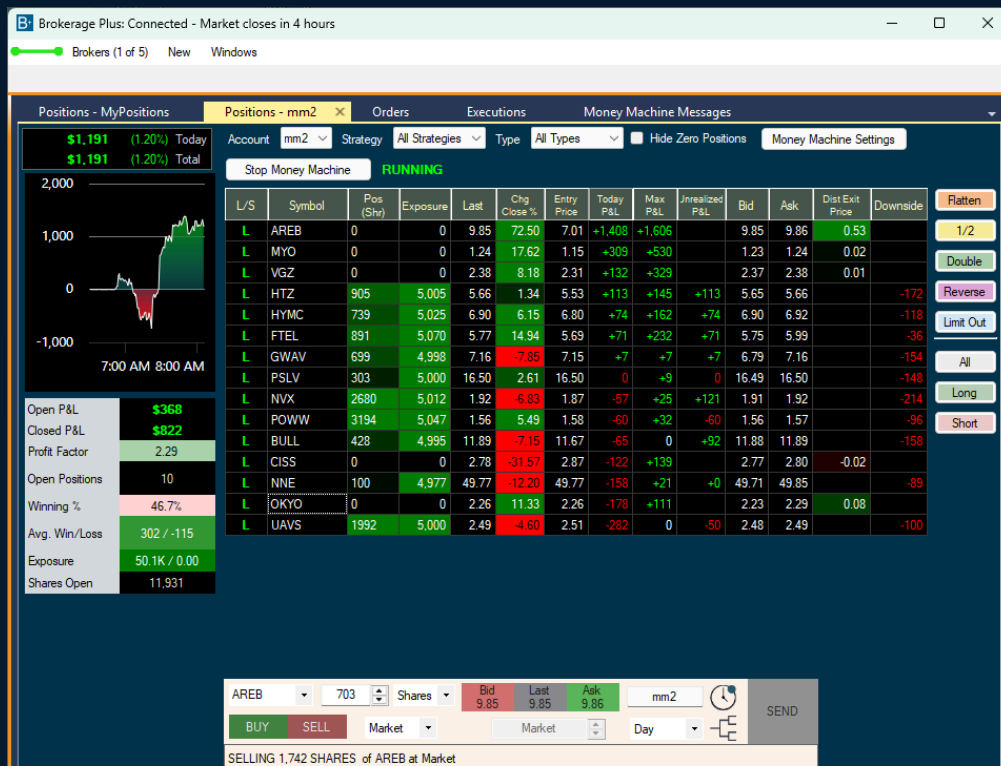
What we've been up to on the journey of providing the best market tools in the world.

## Changes in Version 5.7.7, since the release 5.6.108:

### 🔥 New Features 🔥

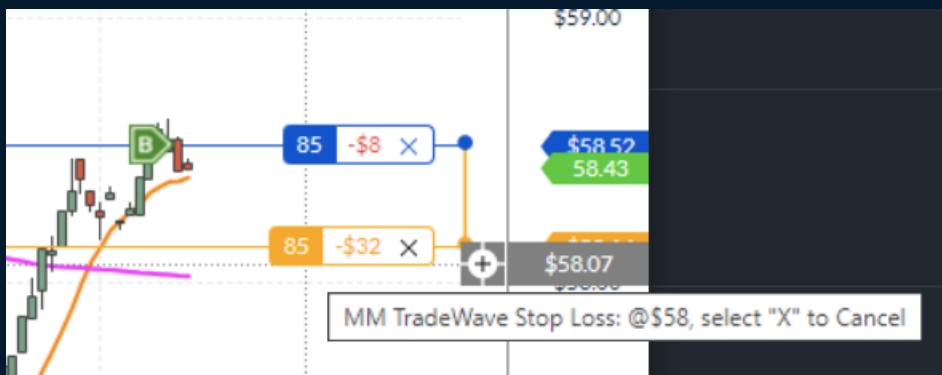
#### Money Machine Beta *(paper mode only—no live brokers yet)*

- Our latest iteration of algorithmic trading supremacy. The Money Machine will be available to all premium users.
- The settings form can be found under New > Money Machine or within the Brokerage Plus Positions tab. From here, users can load pre-made profiles or adjust settings manually for entry and exit criteria, as well as risk parameters.
- Starting the Money Machine will initiate a docked treemap within the Brokerage Plus window, which corresponds to your selected strategy settings.
- Along with the docked treemap, starting the Money Machine will also open a new Money Machine Messages tab, allowing users to audit the actions taken by the Money Machine.
- Users can also use the Money Machine to manage manually-entered positions and to create positions from alert windows and price alerts.

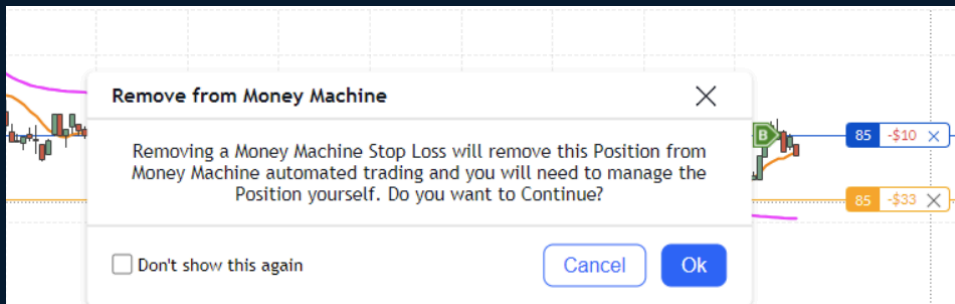


## Money Machine Chart Updates

- TradeWave exit levels are displayed in orange, as part of bracket orders.

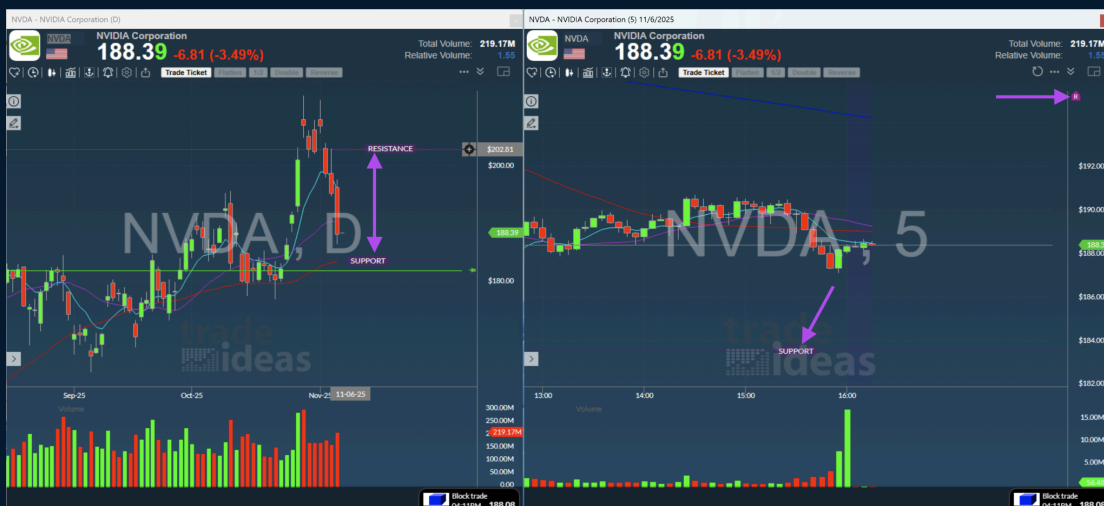


- Orders can be cancelled via the “X” within the brackets, allowing users to manually manage positions when desired.



## Chart Display of Support & Resistance

- We now display the next resistance and support levels on our charts. The line becomes bolder when hovering with tooltip info text about the level and when it was from.
- When the line is not visible, a “home plate” icon will appear in the y-axis to indicate that there is a level off screen.
- This feature can be enabled/disabled in the chart’s ellipsis menu



## 💪 Improvements 💪

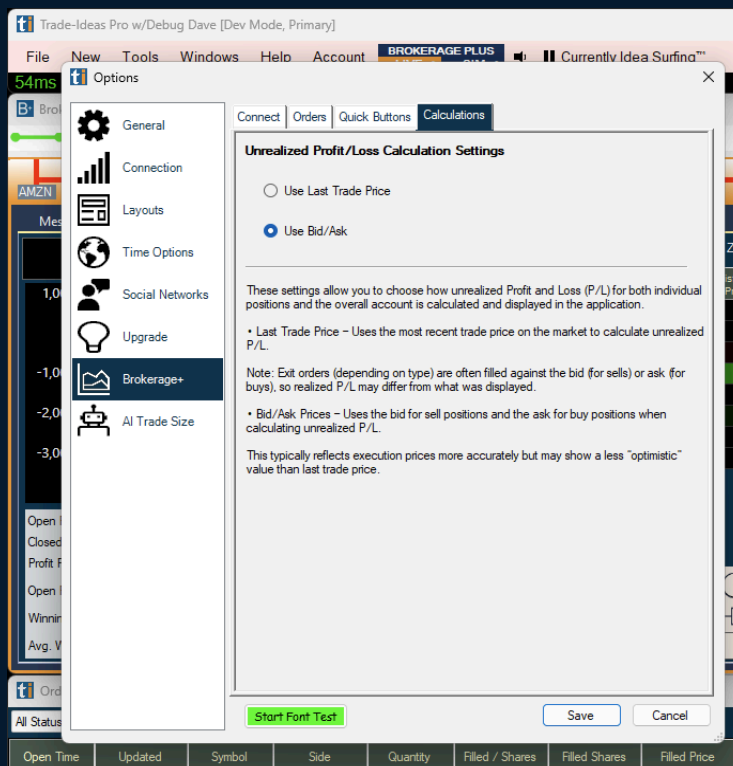
### Order Tag Lines

- We display the order tags on charts so users can visually see entry and exit levels. The lines that extend left from those order tags now extend to the exact bar the order was initiated on.



### Profit/Loss Calculation Options

- We've added options in the Tools > Options > Brokerage Plus tab to allow users to have their profit and loss calculations based on either last price or bid/ask levels to try and mimic real market action more closely.



### Syncing of Order Defaults

- *Bracket order settings are now synced between the Tools > Options > Brokerage Plus menu and the order entry panel within the charts. This allows users to set their preferences once and benefit from fast order entry everywhere.*

### Bug Fixes

- *Addressed a bug that would not obfuscate the account number in the order entry panel of Brokerage Plus while privacy mode was enabled.*
- *Resolved a bug that could cause exceptions for certain users when operating more than one AI Long Term Strategy Trades Window*
- *Fixed a bug that would interfere with a user's ability to upload support files while a file was being actively written to.*